

# SOLD SOLD SOLD

This land area which this map is based on is shown to be the same as that shown on the map of the same land in 1900, and the original survey is on file in the office of the Clerk of the Superior Court of Fannin County, Georgia.

COURSE	BEARING	DISTANCE
1A	S 90° 30' 31" W	12.30 TAN
1B	S 84° 15' 11" W	CH. 38.66 - ARC 38.66
1C	S 81° 15' 11" W	CH. 89.21 - ARC 103.95
1D	S 75° 32' 14" W	CH. 92.32 - ARC 98.82
1E	S 60° 08' - ARC 80.12	CH. 103.08 - ARC 103.08
1F	S 73° 44' - ARC 73.98	CH. 73.44 - ARC 73.98
1G	S 87° 22' - ARC 84.98	CH. 87.22 - ARC 84.98
1H	S 87° 22' - TAN	84.98 - TAN
1I	S 61° 09' 28" W	CH. 101.68 - ARC - 106.86
1J	S 65° 28' 00" W	65.28 - TAN



GEORGIA, Fannin County, Clerk's Office Superior Court  
 Filed for Record... day of... 19...  
 W.S. Check... Recorded... 19...  
 Roy W. Pantler, Clerk

## QUAIL RUN

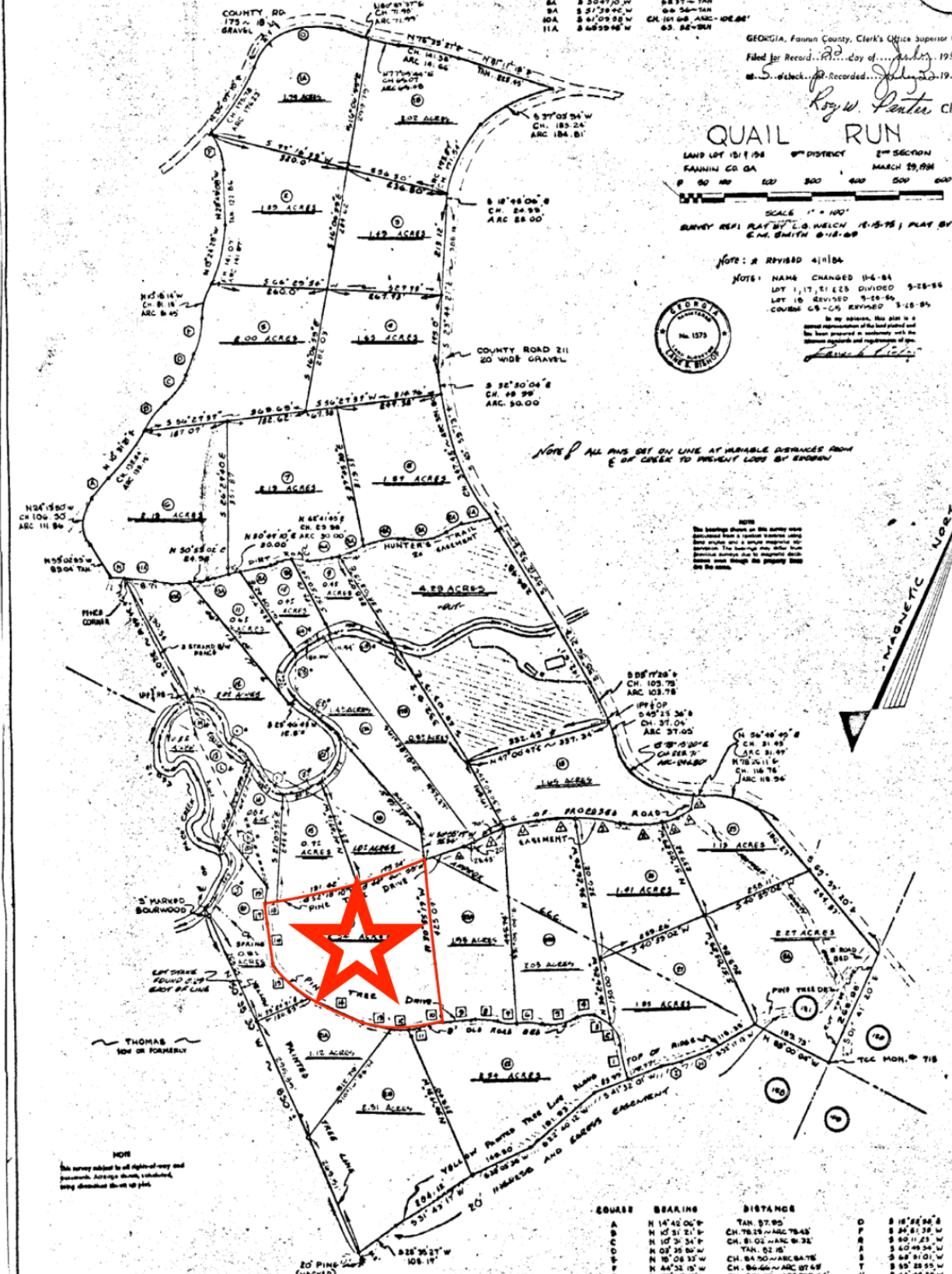
LAND LOT 15198 9TH DISTRICT 2ND SECTION  
 FANNIN CO GA MARCH 29, 1994  
 SCALE 1" = 100'  
 SURVEY REPI. PLAT BY L.G. WELCH 12-15-75; PLAT BY G.M. SMITH 8-18-80



NOTE: 2 REVISED 4/1/84  
 NOTE: NAME CHANGED 11-6-84  
 LOT 15198 DIVIDED 9-28-86  
 LOT 15198 DIVIDED 9-28-86  
 COURSE C8-C9 REVISED 3-18-84  
 In my opinion, this plat is a correct representation of the land parcel and has been prepared in conformity with the Statutes and regulations of the State of Georgia.

NOTE: ALL PINS SET ON LINE AT VARIABLE DISTANCES FROM E OF CORNER TO PREVENT LOSS BY EROSION

NOTE: The bearings shown on this survey were determined from a magnetic meridian using a surveying compass. The bearings are given as magnetic bearings and not true bearings. The magnetic declination for this area is 11° 15' E.



NOTE: This survey subject to all rights-of-way and easements. All areas shown, including, being shown on this plat.

COURSE	BEARING	DISTANCE
1	N 80° 14' 34" W	CH. 70.08 - ARC 86.80
2	N 87° 08' 40" W	44.08 - TAN
3	S 85° 14' 20" W	CH. 38.18 - ARC 38.18
4	S 86° 49' 18" W	CH. 28.88 - ARC 28.88
5	S 86° 47' 43" W	CH. 98.88 - ARC 107.27
6	S 87° 40' 30" W	CH. 47.00 - ARC 48.41
7	S 87° 40' 30" W	CH. 47.00 - ARC 48.41
8	S 87° 40' 30" W	CH. 47.00 - ARC 48.41
9	S 87° 40' 30" W	CH. 47.00 - ARC 48.41
10	S 87° 40' 30" W	CH. 47.00 - ARC 48.41
11	S 87° 40' 30" W	CH. 47.00 - ARC 48.41
12	S 87° 40' 30" W	CH. 47.00 - ARC 48.41
13	S 87° 40' 30" W	CH. 47.00 - ARC 48.41
14	S 87° 40' 30" W	CH. 47.00 - ARC 48.41
15	S 87° 40' 30" W	CH. 47.00 - ARC 48.41
16	S 87° 40' 30" W	CH. 47.00 - ARC 48.41
17	S 87° 40' 30" W	CH. 47.00 - ARC 48.41
18	S 87° 40' 30" W	CH. 47.00 - ARC 48.41
19	S 87° 40' 30" W	CH. 47.00 - ARC 48.41
20	S 87° 40' 30" W	CH. 47.00 - ARC 48.41
21	S 87° 40' 30" W	CH. 47.00 - ARC 48.41
22	S 87° 40' 30" W	CH. 47.00 - ARC 48.41
23	S 87° 40' 30" W	CH. 47.00 - ARC 48.41
24	S 87° 40' 30" W	CH. 47.00 - ARC 48.41
25	S 87° 40' 30" W	CH. 47.00 - ARC 48.41
26	S 87° 40' 30" W	CH. 47.00 - ARC 48.41
27	S 87° 40' 30" W	CH. 47.00 - ARC 48.41
28	S 87° 40' 30" W	CH. 47.00 - ARC 48.41
29	S 87° 40' 30" W	CH. 47.00 - ARC 48.41
30	S 87° 40' 30" W	CH. 47.00 - ARC 48.41
31	S 87° 40' 30" W	CH. 47.00 - ARC 48.41
32	S 87° 40' 30" W	CH. 47.00 - ARC 48.41
33	S 87° 40' 30" W	CH. 47.00 - ARC 48.41
34	S 87° 40' 30" W	CH. 47.00 - ARC 48.41
35	S 87° 40' 30" W	CH. 47.00 - ARC 48.41
36	S 87° 40' 30" W	CH. 47.00 - ARC 48.41
37	S 87° 40' 30" W	CH. 47.00 - ARC 48.41
38	S 87° 40' 30" W	CH. 47.00 - ARC 48.41
39	S 87° 40' 30" W	CH. 47.00 - ARC 48.41
40	S 87° 40' 30" W	CH. 47.00 - ARC 48.41
41	S 87° 40' 30" W	CH. 47.00 - ARC 48.41
42	S 87° 40' 30" W	CH. 47.00 - ARC 48.41
43	S 87° 40' 30" W	CH. 47.00 - ARC 48.41
44	S 87° 40' 30" W	CH. 47.00 - ARC 48.41
45	S 87° 40' 30" W	CH. 47.00 - ARC 48.41
46	S 87° 40' 30" W	CH. 47.00 - ARC 48.41
47	S 87° 40' 30" W	CH. 47.00 - ARC 48.41
48	S 87° 40' 30" W	CH. 47.00 - ARC 48.41
49	S 87° 40' 30" W	CH. 47.00 - ARC 48.41
50	S 87° 40' 30" W	CH. 47.00 - ARC 48.41
51	S 87° 40' 30" W	CH. 47.00 - ARC 48.41
52	S 87° 40' 30" W	CH. 47.00 - ARC 48.41
53	S 87° 40' 30" W	CH. 47.00 - ARC 48.41
54	S 87° 40' 30" W	CH. 47.00 - ARC 48.41
55	S 87° 40' 30" W	CH. 47.00 - ARC 48.41
56	S 87° 40' 30" W	CH. 47.00 - ARC 48.41
57	S 87° 40' 30" W	CH. 47.00 - ARC 48.41
58	S 87° 40' 30" W	CH. 47.00 - ARC 48.41
59	S 87° 40' 30" W	CH. 47.00 - ARC 48.41
60	S 87° 40' 30" W	CH. 47.00 - ARC 48.41
61	S 87° 40' 30" W	CH. 47.00 - ARC 48.41
62	S 87° 40' 30" W	CH. 47.00 - ARC 48.41
63	S 87° 40' 30" W	CH. 47.00 - ARC 48.41
64	S 87° 40' 30" W	CH. 47.00 - ARC 48.41
65	S 87° 40' 30" W	CH. 47.00 - ARC 48.41
66	S 87° 40' 30" W	CH. 47.00 - ARC 48.41
67	S 87° 40' 30" W	CH. 47.00 - ARC 48.41
68	S 87° 40' 30" W	CH. 47.00 - ARC 48.41
69	S 87° 40' 30" W	CH. 47.00 - ARC 48.41
70	S 87° 40' 30" W	CH. 47.00 - ARC 48.41
71	S 87° 40' 30" W	CH. 47.00 - ARC 48.41
72	S 87° 40' 30" W	CH. 47.00 - ARC 48.41
73	S 87° 40' 30" W	CH. 47.00 - ARC 48.41
74	S 87° 40' 30" W	CH. 47.00 - ARC 48.41
75	S 87° 40' 30" W	CH. 47.00 - ARC 48.41
76	S 87° 40' 30" W	CH. 47.00 - ARC 48.41
77	S 87° 40' 30" W	CH. 47.00 - ARC 48.41
78	S 87° 40' 30" W	CH. 47.00 - ARC 48.41
79	S 87° 40' 30" W	CH. 47.00 - ARC 48.41
80	S 87° 40' 30" W	CH. 47.00 - ARC 48.41
81	S 87° 40' 30" W	CH. 47.00 - ARC 48.41
82	S 87° 40' 30" W	CH. 47.00 - ARC 48.41
83	S 87° 40' 30" W	CH. 47.00 - ARC 48.41
84	S 87° 40' 30" W	CH. 47.00 - ARC 48.41
85	S 87° 40' 30" W	CH. 47.00 - ARC 48.41
86	S 87° 40' 30" W	CH. 47.00 - ARC 48.41
87	S 87° 40' 30" W	CH. 47.00 - ARC 48.41
88	S 87° 40' 30" W	CH. 47.00 - ARC 48.41
89	S 87° 40' 30" W	CH. 47.00 - ARC 48.41
90	S 87° 40' 30" W	CH. 47.00 - ARC 48.41
91	S 87° 40' 30" W	CH. 47.00 - ARC 48.41
92	S 87° 40' 30" W	CH. 47.00 - ARC 48.41
93	S 87° 40' 30" W	CH. 47.00 - ARC 48.41
94	S 87° 40' 30" W	CH. 47.00 - ARC 48.41
95	S 87° 40' 30" W	CH. 47.00 - ARC 48.41
96	S 87° 40' 30" W	CH. 47.00 - ARC 48.41
97	S 87° 40' 30" W	CH. 47.00 - ARC 48.41
98	S 87° 40' 30" W	CH. 47.00 - ARC 48.41
99	S 87° 40' 30" W	CH. 47.00 - ARC 48.41
100	S 87° 40' 30" W	CH. 47.00 - ARC 48.41

COURSE	BEARING	DISTANCE
A	N 14° 42' 06" E	TAN 37.80
B	N 10° 31' 21" E	CH. 78.13 - ARC 78.13
C	N 10° 31' 21" E	CH. 81.02 - ARC 81.33
D	N 03° 35' 50" W	TAN 82.18
E	N 15° 08' 33" W	CH. 84.50 - ARC 84.75
F	N 44° 32' 15" W	CH. 84.66 - ARC 87.68
G	N 38° 28' 45" E	CH. 83.13 - ARC 238.64
H	S 44° 01' 06" W	71.05
I	S 82° 50' 15" W	47.30
J	N 06° 31' 32" E	134.18
K	N 33° 40' 53" W	188.73
L	N 02° 47' 41" W	170.92
M	N 28° 24' 41" W	82.51
N	S 60° 58' 45" W	21.87

FOR CLOSURE ONLY